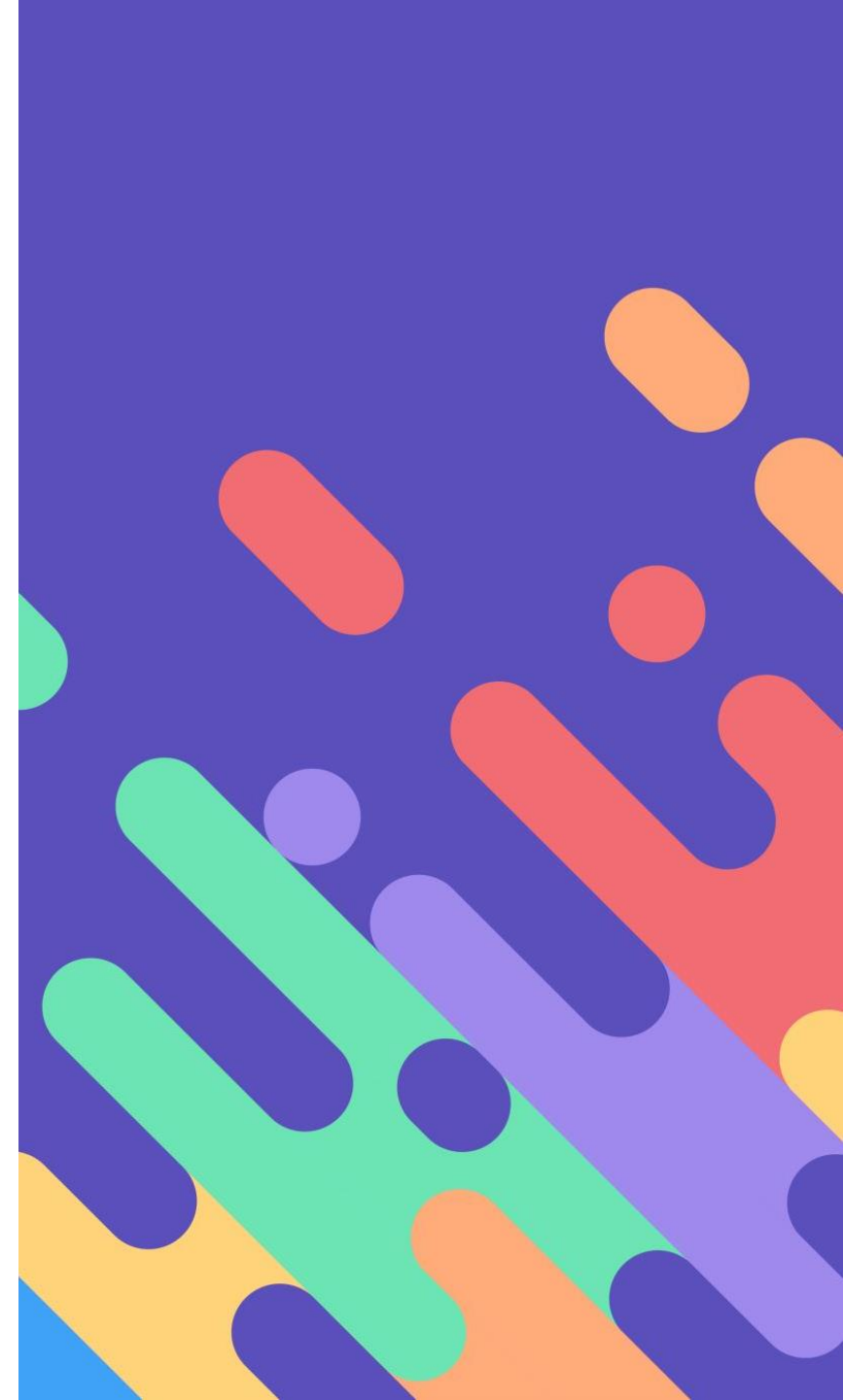


LEXIA: READING INTERVENTION

Monday 6th March



WHY LEXIA?

- For students who are reading below their chronological age by more than 6 months.
- A fast track, responsive programme designed to target the areas on an individual basis.
- Tracks progress.
- Proven success rate – when used effectively.

OUR SCHOOL PROMISE

- Your child will receive two sessions a week (please note the timings of these!)
- 1:1 targeted support when barriers occur.
- Communication with you over access and progress.

	Monday	Tuesday	Wednesday
8:30-9:00	Y3/4	Y2	Y5/6
1:00-1:30	Y5/6	Y3/4	Y2

HOW CAN PARENTS SUPPORT?

- For Lexia to have the desired results, students need to engage with the programme both in school and at home **on a regular basis**.
- We ask that parents set aside **at least** one 20-30 minute homework session a week.
- The environment should be quiet or the pupil can use headphones.
- Talk to your child about how they are finding it. Encourage them by showing an interest in their learning.

HOW CAN PARENTS SUPPORT?

Lexia log in tutorial

<https://www.youtube.com/watch?v=FOyayShUCXA>

Parents guide

<https://www.youtube.com/watch?v=-wobZiokSGs&t=24s>